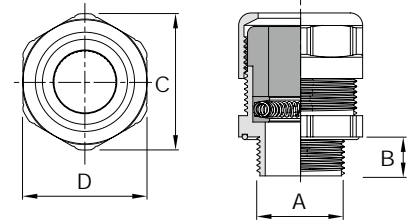


# Cable glands

## Index EMC Type A & B - cable glands



### Index EMC Type A - Cable Gland

High performance IP68 cable gland / Materials: Nickel plated brass, Stainless steel spring, rubber seal (TPE-V)

Part no.	Metric thread A	Type	Thread lengths B (mm)	Gland diameter C (mm)	Across flats dimension D (mm)	Cable max diameter (mm)	Cable min diameter (mm)	Screen dia. max (mm)	Screen dia. min (mm)	Pack quantity	Locknut part no.
260-1050	M16	A	10	26.7	24	9	6	7.5	3.5	1	260-0500
260-1100	M16	A	10	26.7	24	11	7	8.5	4	1	260-0500
260-1200	M20	A	10	26.7	24	9	6	7.5	3	1	260-0600
260-1250	M20	A	10	26.7	24	11	7	8.5	4	1	260-0600
260-1300	M25	A	11	33.5	30	9.5	6	8.5	6	1	260-0650
260-1350	M25	A	11	33.5	30	11	6	9.0	6	1	260-0650
260-1700	M32	A	13	43.5	40	26	22	21.0	15	1	260-0700
260-1750	M40	A	14	54.0	50	29	25	25.0	18	1	260-0750
260-1900	M50	A	15	65.0	60	41	37	33.0	29	1	260-0800

### Index EMC Type B - Cable Gland

High performance IP68 cable gland / Materials: Nickel plated brass, stainless steel spring, rubber seal (TPE-V)

Part no.	Metric thread A	Type	Thread lengths B (mm)	Gland diameter C (mm)	Across flats dimension D (mm)	Cable max diameter (mm)	Cable min diameter (mm)	Screen dia. max (mm)	Screen dia. min (mm)	Pack quantity	Locknut part no.
260-1000	M16	B	10	26.7	24	6	4	6.0	3.0	1	260-0500
260-1150	M20	B	10	26.7	24	6	4	6.0	3.0	1	260-0600
260-1400	M25	B	11	33.5	30	11	6	10.5	6.0	1	260-0650
260-1450	M25	B	11	33.5	30	14	10	13.0	8.0	1	260-0650
260-1550	M25	B	11	33.5	30	18	14	17.5	12.5	1	260-0650
260-1650	M32	A/B	13	43.5	40	23	19	21.0	15.0	1	260-0700
260-1800	M40	B	14	54.0	50	32	29	30.5	24.0	1	260-0750

The INDEX Uni Iris range of cable glands are for use with screened cable and have been designed to connect the screen of the cable to the enclosure screening system. This is achieved by the use of two tapered rings applying force onto a continuous stainless steel spring washer pressing against the screen, ensuring positive contact. Assembly is simple, the screen is exposed, the spring and washers are slipped in place and then the gland can be tightened.

<b>Approvals</b>

<b>IP rating</b>	<b>IP68</b> Yes (10 bar 30mins)
<b>Key features</b>	Screen continues into enclosure IP68 Protection at 10 bar for 30 minutes Metric For use with systems conforming to EN50 082-1/2

<b>Temperature range</b>	Static applications: -40°C to +135°C
<b>Type A</b>	Stripped Cable Sheath - Allowing the outer sheath to be completely stripped from the cable

<b>Halogen free</b>	Yes
<b>Type B</b>	Continuous Cable Sheath - Allowing for a ring of outer sheath only to be stripped